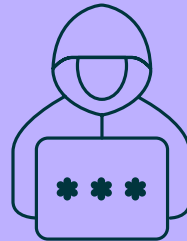


# HUMAN for Education

Keep learning experiences safe, secure, and trusted.

The education sector has digitized at lightning speed, making schools and universities ripe targets for attacks. Cyberattacks on educational organizations result in severe financial losses, theft of IP, and impacts on student and faculty experience. HUMAN protects your web or mobile application from ever-evolving cyberthreats to preserve reputation and revenue.



Account Takeover attacks make up **more than 20%** of all login requests.<sup>1</sup>

INDUSTRY CHALLENGES	HUMAN SOLUTION	
<b>Fraudsters gaining unauthorized access to student and faculty accounts</b>	<b>ACCOUNT TAKEOVER DEFENSE</b>	Stop login bot attacks, such as credential stuffing and brute forcing
<b>Fake accounts are used to apply for and steal financial aid</b>	<b>FAKE ACCOUNT DEFENSE</b>	Neutralize fake accounts created by fraudsters to abuse apps and websites
<b>Automated scraping of research and intellectual property</b>	<b>SCRAPING DEFENSE</b>	Mitigate scraping bots, while allowing known good bots to proceed
<b>Fraudsters draining account balances or making purchases with stored payment cards</b>	<b>COMPROMISED ACCOUNT DEFENSE</b>	Remediate accounts that bad actors have compromised
<b>Skimming of student's tuition payment data at checkout forms</b>	<b>CLIENT-SIDE DEFENSE</b>	Prevent client-side supply chain attacks, such as Magecart, formjacking, and malicious redirects
<b>Payment page compliance with new PCI DSS 4.0 requirements</b>	<b>PCI DSS COMPLIANCE</b>	Simplify payment page script management in compliance with PCI DSS 4.0

<sup>1</sup>HUMAN Security - The Quadrillion Report: 2024 Cyberthreat Benchmarks

# Case Study

## Challenge

At an online learning platform, increased attacks on its websites led to financial losses and damaged student and faculty trust.

## Solution

Implemented protective measures including Scraping Defense, Account Takeover Defense and Client-side Defense, providing real-time visibility and control, safeguarding against various automated threats. Blocked bots at login pages, recovered 80% of the traffic due to ATO bots.

**“HUMAN was able to block all of the malicious traffic, rate limit at the edge and ease the load on our web infrastructure.”**

– VP of Information Technology,  
Online Learning Platform

## Key Capabilities



### Preserve Student and Faculty Experience

Low latency enforcer blocks bots at the edge using out-of-band signals and validates 95% of users in under 2ms



### Block Bots the First Time

Precheck blocks bots on the first request, so bad actors can't access or scrape a single page



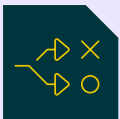
### Unparalleled Accuracy

Detect threats using behavioral analysis, and 400+ machine learning algorithms; respond to threats with range of mitigation actions



### Mobile SDK and Integrations

Seamlessly integrate with your CDN, cloud, SDK, SIEM, CIAM, ticketing, and monitoring tools



### Frictionless for Real Humans

User-friendly verification challenge is only shown to 0.01% of human visitors, so the Student journey isn't interrupted



### Single Pane of Glass Management

Access a single console to see key details, edit policies, and generate out-of-the-box and custom reports

## The Human Advantage

### Scale

We verify more than 20 trillion digital interactions weekly across 3 billion unique devices providing unrivaled threat telemetry.

### Speed

Our Decision Engine examines 2,500+ signals per interaction, connecting disparate data to detect anomalies in mere milliseconds.

### Decision Precision

Signals from across the customer journey are analyzed by 400+ algorithms and adaptive machine-learning models to enable high-fidelity decisioning.

*HUMAN is a leading cybersecurity company committed to protecting the integrity of the digital world. We ensure that every digital interaction, transaction, and connection is authentic, secure, and human. HUMAN verifies 20 trillion digital interactions, providing unparalleled telemetry data to enable rapid, effective responses to the most sophisticated threats. Recognized by our customers as a G2 Leader, HUMAN continues to set the standard in cybersecurity. For more information, visit [www.humansecurity.com](http://www.humansecurity.com)*